

My Gentofte

Municipal statistics

Area:

25 km²

Population:

75,000 (approximate)



History

Town arms

Gentofte Kommune's town arms has remained true to its original design and symbolism since 1903, with only minor updates over the years. Three bells represent the three original parishes: Gentofte, Ordrup and Hellerup. The trees are a tribute to our green spaces, inspired by the large trees along Jægersborg Allé. Our location by Øresund, where the sun rises over the water, is symbolised by the sea and the sun.

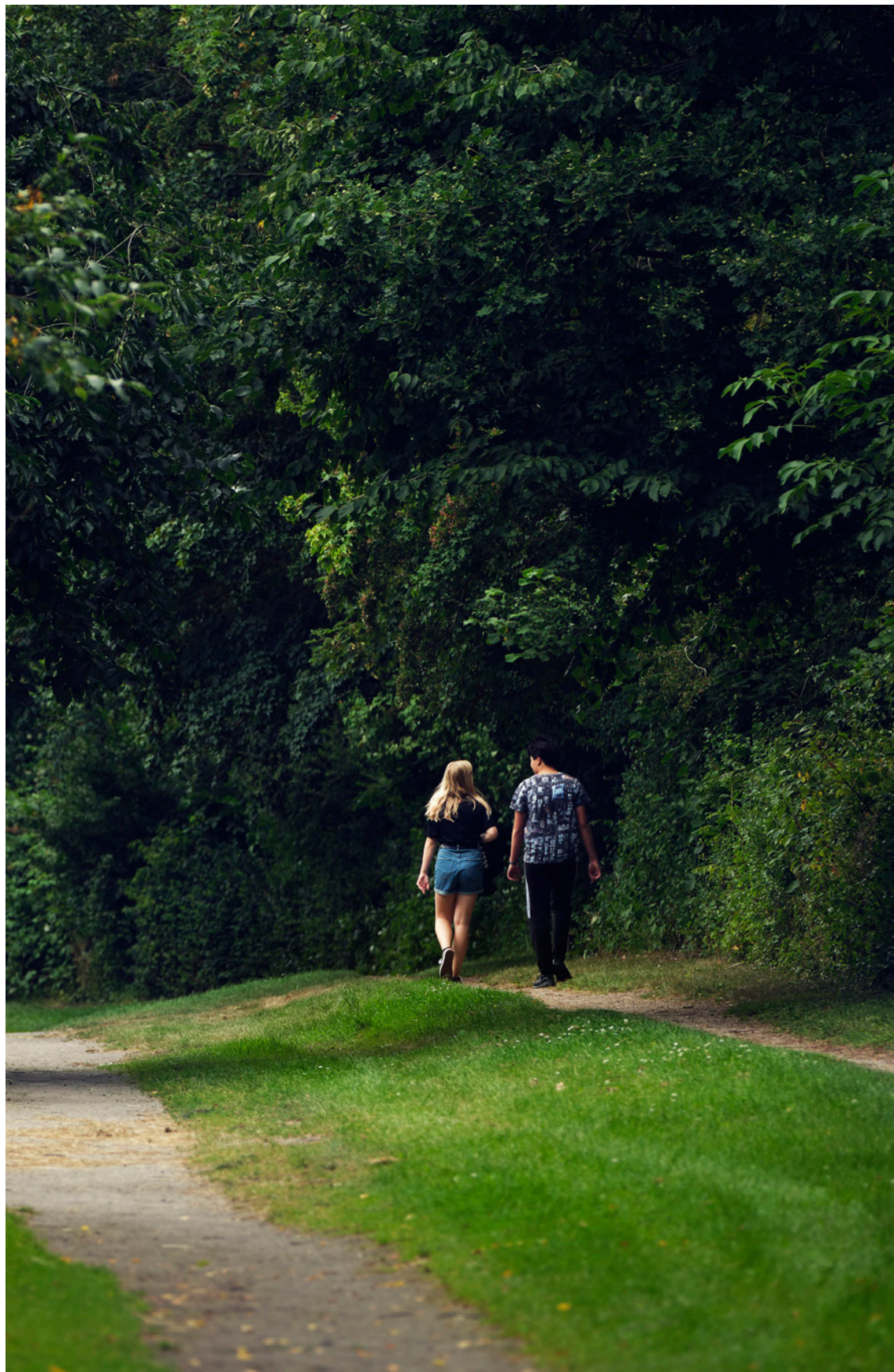
Mayoral chain

Gentofte Kommune has the honour of owning Denmark's first mayoral chain, made back in 1934 for the modest sum of 850 kroner. The chain is made of gold-plated silver with enamel on the arms, the year and the flag. The mayor wears the chain on special occasions.



Contents

03	A hearty welcome	39	What do you love doing in your spare time?
04	– a great place to reside, live and work	41	Sports, exercise and association activities
07	How can we help you?	43	Culture
09	Help with waste and recycling	47	Architecture and design
11	Help with modernisation and renovation – with consideration for the climate	49	Outdoor life
14	Help with parking and traffic	51	SoMe
17	Help with theft prevention		
19	Who are you?		
21	Are you a family with children?		
27	Are you a young person? Or parents of a young person?		
33	Are you a senior citizen?		
34	Are you looking for work, on sick leave or on a subsidised employment programme?		
37	Do you have a physical or mental disability?		



WELCOME TO GENTOFTE

A hearty welcome

– and congratulations on your new home here in Gentofte Kommune!

Gentofte is more than just a geographical area known for its favourable location just north of Copenhagen. Our municipality is also known for its unique combination of green spaces, cultural wealth and a strong commitment to creating a sustainable and inclusive community.

The pages ahead contain all the information you'll need about our municipal amenities, services and activities, designed to help you settle in Gentofte as smoothly as possible.

Whatever brings you here – work, study, family life or just residency – know that you're a valued member of our community. We encourage you to explore, participate in and contribute to local life so you can enjoy all that our beautiful municipality has to offer.

Welcome to Gentofte once again! We look forward to being a part of your life's journey and to helping you create an even better place to call home.

Michael Fenger
Mayor, Gentofte Kommune

– a great place to reside, live and work

We work together

Here in Gentofte, we work together to develop ambitious solutions for the future. We take joint responsibility for our municipality and collaborate to ensure the highest quality of welfare services for all.

We are innovative, efficient and have the lowest possible taxes

We employ a holistic, innovative approach, grounded in efficient municipal management that combines minimal taxation with a healthy, robust economy.

We provide the best possible framework for everyday life

In Gentofte residents of all ages have the best possible framework for a safe and active way of life. Our municipality delivers exceptional services while fostering each individual's potential for growth and development. An active and diverse network of businesses, associations and cultural organisations enriches our community. We value both inclusivity and respect for the individual, providing a secure and inspiring foundation where quality of life, personal initiative, creativity and enterprise can flourish.

We take responsibility for green and sustainable development

With its natural beauty and green spaces, Gentofte offers diverse outdoor activities while preserving the valuable cultural heritage we cherish. Through concrete, local initiatives, we drive sustainable development and reduce our environmental impact by minimising our consumption of natural resources.





HOW CAN WE HELP YOU?

How can we help you?

While you might not need us every day, there are times when you'll need to get in touch.

Borgerservice (citizen services) is your gateway to essential public services, handling everything from passports and driving licences to weddings, civil registration, health insurance, changing doctors, childcare placement, parking, Digital Post, self-service and much more besides.

At Borgerservice, we also offer assistance with self-service and guidance to connect you with the right departments and authorities.

Borgerservice
(situated to the left of the town hall's main entrance)
Bernstorffsvej 161
2920 Charlottenlund
Telephone: 3998 0000



HOW CAN WE HELP YOU?

Help with waste and recycling

If you live in a detached or terraced house...

...you have bins for food waste/residual waste, paper/glass, plastic/food and drink cartons/metal, small electronics and environmentally hazardous waste (red box) and a bin for garden waste, if you purchase one yourself. You also have the option to order a bin for cardboard at gentofte.dk/pap, if you do not have one already. Textile waste should be placed in clear, securely tied bags and put out with your bulky waste.

Food waste should be placed in green bags. When you need new bags, simply tie a bag to the handle of your food waste bin and the refuse collector will leave replacements for you. We provide green kitchen caddies for sorting food waste.

If you live in a block of flats...

...you are required to sort food waste, glass, paper, plastic/food and drink cartons, metal, cardboard and residual waste. Check if your property has a designated textile waste bin. If not, please put your unwanted textiles out with your bulky waste. Textile waste should always be placed in a securely tied plastic bag, even if you put it in a bin. Some properties have environmental cabinets for hazardous waste, and others have environmental boxes for hazardous waste and electronics.

Green bags for food waste are available in a centrally located box, typically in courtyard areas, or by contacting the person responsible for waste at the property, e.g. the caretaker, who will order new bags for you.

Bulky waste

We collect bulky waste every 4 weeks. We recommend that you read the bulky waste collection guidelines to make it easy for refuse collectors to collect the different types of waste that are accepted.

The recycling centres in Gentofte

Any waste that is not collected at your address, such as construction waste, should be taken by you to the recycling station and placed in the appropriate containers. While clear signage and helpful staff are there to guide you, it's a good idea to pre-sort your waste at home.

The recycling centre is open unmanned for a period before and after the manned opening hours. Registration is required for access during unmanned opening hours.

Recycle to iRecycle

You'll also find a book exchange cabinet and a recycling facility at the recycling centre. iGenbrug manages the collection of reusable furniture and household items. The items are resold at their second-hand shop at Stolpegårdsvej 24, which is staffed by employees with special needs. If you have items in good condition such as porcelain, furniture, books, or kitchen utensils, which are too good to throw away, iGenbrug will gladly take them off your hands.

- **Find waste collection dates**
gentofte.dk/affald
- **Need a green caddy?**
Write to renovation@gentofte.dk
- **Recycling centre**
Gentofte Genbrugsstation,
Ørnegårdsvej 15, 2820 Gentofte
- **Donate items in good condition which others may enjoy**
gentofte.dk/genbrug



HOW CAN WE HELP YOU?

Modernisation and renovation – with consideration for the climate

Thinking of doing some construction work on your new house, inside or out? Or planning to landscape your garden? Make sure you're familiar with the relevant permits and regulations before you begin.

Building permits

It's worth checking whether you need a building permit for your project. Your property may even have culture-historical or architectural significance. If so, you'll need to apply for permission before making any exterior changes.

Energy optimisation

Energy-efficient home improvements can lower your bills while making your home more comfortable. If your project requires a building permit, our energy consultant can help you integrate energy-efficient solutions. We offer consultations at Gentofte Town Hall, at your home, online or over the phone.

District heating

By the end of 2027, at least 99.8% of all properties in Gentofte Kommune will have access to district heating. When Gentofte Fjernvarme expands to your area, you'll typically be offered access if your property isn't already connected. Connection is offered free of charge – i.e. it won't cost you anything. Just remember to sign up before the deadline.

Hedges and fences

Property boundaries along roads should typically be hedgerows rather than solid fencing. If you're planning to establish a boundary along the road, choose natural solutions such as hedges, trees or shrubs rather than walls or wooden fencing.

Water and drainage

Gentofte is taking decisive measures to prepare for climate challenges, including increased rainfall, extreme weather events and the more frequent risk of flash flooding.

We're working with our water utility company Novafos to separate stormwater from wastewater in our drainage system, helping prevent sewer overflow and flooding. If you're planning renovations, a new driveway or similar improvements, we recommend first checking whether the drainage system separation work might affect your plans.

You should also note that there are limits to the volume of rainwater you may discharge into the sewer system, and that may influence how much of your plot can be covered by buildings or hard surfaces such as paving.

Rainwater can also be transformed into a valuable resource for your property. You can, for example, manage rainwater through features such as green roofs, or by designing your garden with natural depressions and rain gardens that allow water to slowly seep into the ground. These solutions create better habitats for flora and fauna, while reducing the pressure on our sewer system during heavy rainfall.

Make your garden a haven for nature

In Gentofte, we're committed to protecting our natural environment. We have many areas of natural beauty which are home to rare species and high natural value, making it essential to do everything we can to ensure all plants and animals thrive here. This is also why we allow the grass to grow freely in certain areas.

- **Find all you need to know about housing, urban planning, construction, permits, energy optimisation and water/drainage systems** gentofte.dk/bolig-og-by

- **Climate and sustainability**
Learn about our ongoing initiatives and discover ways you can contribute at klima.gentofte.dk

HOW CAN WE HELP YOU?



Help with parking and traffic

Road safety – Let us know

We take great pride in maintaining attractive and welcoming surroundings throughout our municipality. To do this, our 'Park og Vej' (Parks and roads) department depends on feedback from residents – and we welcome your input. Let us know about potholes, broken branches or other matters that require our attention.

Driving an electric car?

You'll find charging stations at numerous locations across our municipality. If you need to charge your electric car at home, you can apply to have a cable channel installed under the pavement.

Parking

Many of our parking zones have time limits so please check the signage. However, if you live, work or own a business in one of the municipality's parking zones, you can apply for a parking permit.

If you have a disability, you can apply for a personal parking space near your home.

- **Let us know**
gentofte.dk/gjivetvink
- **Find map of charging stations**
gentofte.dk/elbilerogopladning
- **Obtain your parking permit**
gentofte.dk/parkeringslicens
- **Apply for a disabled parking space**
gentofte.dk/handicapparkering

Gentofte Kommune is implementing various noise reduction measures, including lowering the speed limit on the Lyngby bypass to 70 km/h.





HOW CAN WE HELP YOU?

Help with theft prevention

Gentofte – a theft-free zone

Together, we can prevent theft, and your awareness is our strongest defence. We provide guidance on burglary prevention and theft deterrence, including presentations and safety walks in your local area.

On a safety walk, you'll receive practical tips and useful advice on how to safeguard your neighbourhood from burglary. The walk allows ample time for questions and discussing security solutions. Safety walks can be tailored to your specific requirements, with sessions typically lasting 1–2 hours.

- **Gentofte – a theft-free zone**
frifortyveri.gentofte.dk
- **Impartial guidance for residents on protecting their homes against burglary**
stopindbrud.dk
- **Bo Trygt (Secure living) – a collaboration between TrygFonden, Realdania, Bolius and the Danish Crime Prevention Council**
botrygt.dk
- **The Danish Crime Prevention Council**
dkr.dk

A safety ambassador is a neighbourhood watch coordinator who has both valuable local knowledge and a particular understanding of which key partners to involve.



WHO ARE YOU?

Who are you?

We welcome everyone in Gentofte, while recognising that people's needs vary throughout life's stages – from young parents and those raising teenagers to seniors and people with disabilities. We're here to support you, offering tailored services from child-care to elderly care, and disability-accessible facilities, all designed to meet the specific needs of you and your family.

Our 'Who are you?' section guides you on services tailored to your current situation.



WHO ARE YOU?

Are you a family with children?

We're committed to ensuring every child's wellbeing and development – and making sure parents feel secure and welcome. Through our childcare guarantee and range of childcare options, we create a secure environment where you can feel at home – offering everything from nursery care and health visits to dental care, leisure activities and playgrounds.

Childcare options – a safe haven for young children

We offer a childcare guarantee in Gentofte and have more than 4,000 children in institutional childcare and a smaller number of children placed with childminders or cared for privately.

Reserve your child's place using our online placement system at gentofte.dk or via the BørneGenvej app. If you're moving to Gentofte, you can access our digital childcare placement system three months before your relocation.

Transition to pre-preparatory classes

Children start school in August, the year they turn 6. You can enrol your child in any of Gentofte Kommune's 11 primary and lower secondary schools, subject to available spaces. There are also seven private schools in the municipality.

When it's time to enrol in reception class (0. klasse), parents will automatically receive an invitation for digital enrolment via Digital Post.

Public health service

Our public health service supports families with young children and school-age children – it's optional and completely free.

Our health visitors will visit your child at home for the first 10 months of his or her life, with continued support available until they start school. Connect with other parents through our mothers' groups and cross-cutting groups.

At school, we promote children's health and wellbeing through a combination of individual consultations, health checks and health education. Our paediatric physiotherapist offers motor skills training for preschool children.

Dental care

Gentofte Kommune provides dental care for children and young people from birth to 18 years of age. We offer personalised care and invite children for their first dental visit at 12 months. Our four dental clinics offer a full range of dental services, and parents are always welcome to contact us with any questions.

After school

Children from reception class through 3rd grade have the option to attend our after-school care programme (GFO), where children enjoy a combination of educational activities, playtime and social interaction with friends, under constant adult supervision. After 3rd grade, Gentofte Kommune offers other recreational programmes. Schools are responsible for recreational programmes for children up to and including the 6th grade.

Active school holidays

Children and young people who go to school or live in Gentofte can explore a wide range of activities during school holidays, including basketball, riding, theatre and skateboarding classes. Local clubs and organisations offer sports and cultural activities during these periods. The full programme of activities is available on the Danish school communication platform, Aula.

Playgrounds

You'll find 14 playgrounds throughout our municipality, each offering great play facilities. Each playground has its own distinct character, and most are located adjacent to public parks and green spaces.

- **Find a place and enrol**
Download the 'BørneGenvej' app

- **Find a school**
gentofte.dk/boern-og-unge/skole/skoleindskrivning

- **Find dental clinics**
gentofte.dk/tandpleje

- **Find playgrounds**
gentofte.dk/fritid

In Gentofte, there are more than 4,000 children in institutional childcare and a smaller number of children placed with childminders or cared for privately



WHO ARE YOU?





WHO ARE YOU?

Are you a young person? Or parents of a young person?

Being young isn't always easy – and neither is parenting a young person. In Gentofte, we're dedicated to supporting our young people and we've developed a comprehensive range of services specifically for this group. We offer support and guidance across a wide spectrum – from creative school programmes and sports activities to recreation, cultural education and youth housing.

Whatever your child's situation – whether they're passionate about sports, struggling with school, facing special challenges, or simply seeking social connections – we have options for them.

For you as a young person:

Creative partnerships in 7–9th grade

Gentofte Kommune offers multiple pathways for pupils in 7–9th grade. Some of the classes are held at Byens Hus, where they can explore creative technologies such as 3D printing, robotics, podcasting, filmmaking and graphic design, or engage with community projects and global sustainability goals.

Another creative partnership is with the Fulton Fodboldakademi (football academy), the perfect option for you if you love football and want to make it part of your everyday school life. You'll find a strong community here that focuses on enjoying football rather than elite-level competition. It's a three-year course that culminates in the primary and lower secondary school leaving exam on an equal footing with other pupils.

In addition to the 11 municipal primary and lower secondary schools, you'll find seven private schools, four upper secondary schools, an HF programme (higher preparatory course), and a 2-year university preparation course (studenterkursus).

Sports programme for upper secondary students

If you're an elite athlete, you can pursue your sporting ambitions while completing upper sec-

ondary school or HF courses. Gentofte Kommune has established a sports programme (Gentofte Idrætsordning) in collaboration with four local upper secondary institutions: Ordrup, Øregård and Gammel Hellerup, as well as Gentofte HF. Admission to the sports programme is subject to application. As a student on the sports programme, you'll have the option of getting priority admission status, participating in morning training, accessing physiotherapy supervision, Team Danmark courses in sports nutrition and injury prevention, sports psychology workshops and much more besides.

After school

We offer a wide range of programmes for young people like you. Once you reach 7th grade, you'll have access to a variety of after-school programmes offered by Gentofte Ungdomsklub (youth club), Ungekultur (youth culture) and Ungdomsskolen (an evening school for young people).

Check out places such as Musikbunkeren (the Music Bunker), Ung i Byens Hus (youth activities at the cultural house) and Gentofte Ungdomsklub, plus our Deltag-bus – all created in partnership with young people just like you.

Got an idea for a leisure activity?

If you dream of starting your own activity for or with other young people in your spare time, you can contact our youth culture consultant or Ung i bevægelse (Youth in action) programme for help in getting started – including financial support. Two special funds are available to support youth initiatives: Ungekulturpuljen (the youth culture fund) and Lynpuljen (the quick fund).

Young people have a voice in Gentofte

As a young person, you can join various committees alongside experienced politicians, receive funding for projects, design recreational activities and much more besides. Our youth policy, EN UNG POLITIK, was developed in cooperation with local young people and politicians. It aims to provide

WHO ARE YOU?

greater autonomy, better support during difficult times, improved student counselling and closer cooperation with the municipality.

The culture schools

The culture schools include both Gentofte Musikskole (music school) and Drama- og Billedskolen (the school of drama and visual arts), offering engaging courses, while additional classes are available through evening schools. We want to help you explore your creative and musical talents, both through school activities and by offering exciting cultural packages, and by bringing cultural experiences directly to your classroom.

Gentofte ungdomsskole

Ungdomsskolen offers free recreational activities for young people from 7th grade until the age of 17 who either live or go to school in the municipality. Select classes are open to pupils from 6th grade. We offer young people a diverse range of activities from creative workshops and cookery classes to academic courses and many other social activities. Visit gentofteung.dk to explore all our current youth leisure activities.

Ungdomsskolen is also home to both our 10th grade programme and special educational programmes for pupils in 7-9th grade.

No job or qualifications?

Ungecenteret (the youth centre) on Hartmannsvej is a dedicated facility for young people aged 18-29 who are not currently in employment or education. The centre's primary focus is to fast-track young people into education or employment. They offer various workshops and meetings specifically aimed at young people.

Youth housing

Tired of living at home? Gentofte Kommune offers various housing units, which young people residing in the municipality are eligible to apply for. You can join the waiting list, which is managed by the Danish housing association KAB, when you turn 14. There are also 86 public youth housing units in Jægersborg Vandtårn and Ørnegårdsparken, managed by Domea.

For you as a parent of a teenager or young adult:

Network, newsletters, etc.

In Gentofte Kommune, we offer a range of services for parents with adolescent children. Here you have access to a parent network, newsletter, free educational events and themed sessions – all designed to provide you with the knowledge and tools you need to support your children, in good times and in bad.

Family support for children, young people and their parents

Gentofte Kommune also offers counselling services for you and your children. Free, anonymous counselling is available through our family centre, and our schools offer support from both school psychologists and school nurses.

Young people aged 15-25 are eligible for up to five free sessions with a psychologist if they're going through difficult times. We offer various schemes for young people who are struggling with overwhelming worry, eating issues or anxiety. If there are concerns about substance use becoming a problem, our substance abuse consultant offers counselling and therapy sessions for both you and your child.

Our SSP (school, social services and police) consultant and outreach workers provide guidance on youth issues and family challenges, and offer assistance if your child is involved with substance abuse or crime. Support for young people is also available through Headspace Gentofte – an open, anonymous counselling service on offer at Byens Hus on Hellerupvej 22-24.

If your teen needs help with homework or would benefit from social interaction with an adult through activities such as walks or other meetups, Frivilligcenter Gentofte (volunteer centre) offers a mentoring scheme that matches adult volunteers with young people over shorter or longer periods. The youth initiative – enhancing the quality of life for vulnerable young people.

- Explore secondary and upper secondary education options gentofte.dk
- The Deltag-bus detmobileungekontor.dk
- Are you creative? kulturskolerne.dk
- Find youth accommodation kab-bolig.dk, domea.dk
- Gentofte Ungdomsskole gentofteungdomsskole.aula.dk
- Youth support headspace.dk/gentofte
- Frivilligcenter Gentofte frivilligcentergentofte.dk



WHO ARE YOU?





WHO ARE YOU?

Are you a senior citizen?

We have a strong community of senior citizens in the municipality, which we hope you will be a part of. From fitness activities and cultural events to daycare facilities, we offer a diverse selection of activities tailored to your interests and needs.

Our goal isn't for you to be running marathons all the time – though you're welcome to – but rather that you stay happy, strong and independent for as long as possible.

Health and communities

As a senior citizen, you have access to numerous activities designed to help you connect with others and engage in communities built around common interests.

Rådhusdage (town hall days) is a free programme for residents in the municipality aged 67+. Join us for an exciting line-up featuring renowned speakers, popular musicians and an introduction to the wide range of municipal services.

Daycare facilities

We want you to be able to live independently in your own home for as long as possible. That's why we have three daycare facilities where, in addition to providing diverse activities, we focus on your physical and mental wellbeing. In Gentofte, we have three daycare facilities: Tværbommen, Venerslund and Rygårdcentret.

Preventive care and health

Staying active is key to maintaining your independence for as long as possible. We therefore offer a range of services designed to enhance your wellbeing and mental and physical health. Learn more about them at gentofte.dk under 'Sundhed og Omsorg' (Health and care).

Seeking new ways to keep fit? Our exercise guidance service helps you begin your fitness journey, even if you're managing a chronic condition. Won-

dering which type of exercise is right for you? Our exercise guidance can help you get started.

Our LEARN TO COPE workshops equip you with the tools you need for a better quality of life through peer support, mental wellness strategies, network building and activities. Our workshops support both people experiencing anxiety or depression and their relatives.

We also offer preventive care programmes for people with chronic conditions including cancer, COPD, heart disease, and diabetes.

Disability equipment

We provide advice and guidance on disability equipment, home modifications and mobility solutions for people with physical or mental disabilities.

Senior housing and care homes

The municipality has around 1,300 homes for elderly and disabled residents, 850 of which are located in 11 care homes and sheltered housing facilities.

- **Health**
gentofte.dk/ældreaktiviteter
- **Find daycare centres and daycare homes**
gentofte.dk/dagcentre
- **Rehabilitation services**
gentofte.dk/sundhedogomsorg
- **Find housing**
gentofte.dk/søgbolig
- **Clubs and associations**
gentofte.dk/fællesskabogklubber

Are you looking for work, on sick leave or on a subsidised employment programme?

The job centre serves both residents and businesses in Gentofte Kommune.

For job seekers

The job centre's dedicated team provides support for residents who are unemployed or on sick leave from work.

If you're looking to boost your network, health and wellbeing, you're welcome to join 'Walk with Gentofte'.

Apply for a job in Gentofte – Gentofte's job promise

In Gentofte Kommune, we go to great lengths to create a work life to suit each of us and the different lives we lead. We believe this approach leads to greater job satisfaction and wellbeing, ultimately benefiting our 75,000 residents. We regularly post new positions.

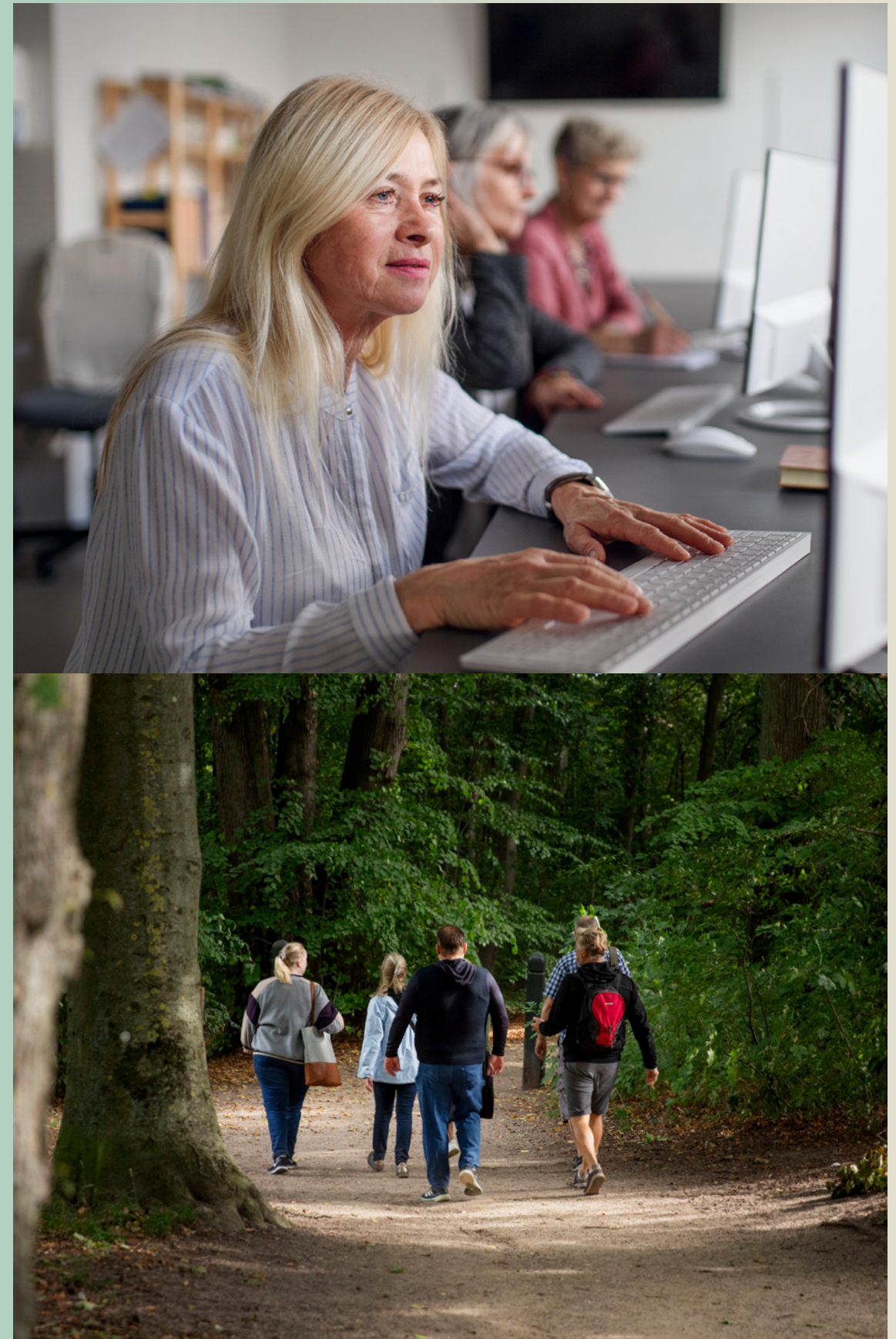
Support for changing alcohol consumption or substance use

If you're concerned about your consumption of alcohol or other substances – or you're concerned about someone you know – Gentofte Kommune offers anonymous counselling.

For businesses

Are you a business owner in need of help with recruitment? Or would you like to know more about running a business in Gentofte Kommune?

- **Search for jobs**
gentofte.dk/job
- **Unemployed or on sick leave**
gentofte.dk/arbejdsliv
- **Walk with Gentofte**
gentofte.dk/gåmedgentofte
- **Drugs and alcohol**
gentofte.dk/alkohologstoffer
- **Business**
gentofte.dk/erhverv





WHO ARE YOU?

Do you have a physical or mental disability?

Everyone deserves the chance to live as independently and meaningfully as possible, regardless of their abilities or circumstances. Our priority is therefore to ensure that everyone with a disability or mental illness has access to relevant, high-quality services in their local community wherever possible.

Institutions and services for everyone with disabilities, a handicap or mental illnesses.

We provide comprehensive support services and facilities for children and adults with disabilities and mental illnesses. Our services include 24-hour care centres, respite care and specialised educational support for children and young people.

We support adults through residential care, communal living options, employment services, social activities, in-home support and recreational activities.

Sport for people with disabilities

Working with local associations and evening schools, we provide a range of customised sports and leisure activities for people with disabilities and special needs.

The services range from activities targeted at specific disabilities and age groups to more general services open to all.

Dental care

We provide dental care services specially targeted at people with physical or mental disabilities who find it challenging to visit regular dental practices.

- **Get help**
gentofte.dk/sundhed-og-omsorg
- **Sport**
gentofte.dk/idraetfunktionsnedsaettelser



WHAT DO YOU LOVE DOING IN YOUR SPARE TIME?

What do you love doing in your spare time?

Gentofte offers you the perfect setting to explore what you love doing most.

Whether you're passionate about keeping fit, experiencing culture, or exploring nature, we have something for you. With our wide range of sports facilities, dynamic associations, cultural offerings and green spaces, we guarantee you'll find something for you here.



WHAT DO YOU LOVE DOING IN YOUR SPARE TIME?

Sports, exercise and association activities

Something for everyone

In Gentofte, we have a treasure trove of sports facilities and dynamic associations offering leisure activities for everyone, from grassroots to elite athletes.

We offer it all – a thriving recreational sports community and, as a Team Danmark Elite municipality, we nurture sporting talent while inspiring young people to embrace active lifestyles.

Our 'One hour of activity a day' initiative encourages everyone in our community to be active for an hour every day. We offer a wide range of clubs and associations for all interests, with new groups forming regularly. Our 'Come and join in' events allow you to try new sports with no commitment.

Facilities for all kinds of sports and exercise

Gentofte's commitment to sport includes ongoing investment in state-of-the-art facilities. Whether you're into indoor or outdoor activities, our facilities, which include sports halls and artificial turf pitches, make it easier for you to stay active.

The largest facilities such as Kildeskovshallen, Gentofte Sportspark and the club and water sports facilities in Skovshoved and Hellerup offer all kinds of activities for everyone.

- Kildeskovshallen has swimming pools, indoor courts, exercise rooms and more.
- Gentofte Sportspark features ice rinks, indoor courts, athletics facilities and much more besides.
- Jägers in Sportsparken is the go-to destination for skateboarders, scooter enthusiasts and roller bladers of all ages.

We look forward to seeing you on the pitches and courts, in the halls or on the running trails!

- **Find sports venues and self-organised facilities**
gentofte.dk/idraet



WHAT DO YOU LOVE DOING IN YOUR SPARE TIME?

Culture

Museums, theatre and events

Discover our six libraries, the Øregaard and Ordrupgaard art museums, Bellevue Theatre and committed associations. Throughout the year, we collaborate with residents and institutions to bring cultural events such as Kultur & Festdage, Golden Days Festival and GentoftesNatten (culture night) to life.

Have an idea? We offer funding to support your initiatives.

Gentoftes library service

Immerse yourself in learning at Gentoftes libraries – from the central library in Hellerup to district libraries throughout the municipality. There's so much more to libraries than books – they're cultural experience centres. Stay abreast of current affairs, participate in debates and explore art exhibitions. Activities for all ages, from reading clubs to language cafés. For our senior readers and those with mobility difficulties, we offer to bring the library to you.

Cultural events – find out what's on

Visit our website, gentofte.dk/kalender, for an overview of all events and cultural offerings in Gentoftes.

You can also sign up to receive the newsletter from Kulturklub Gentoftes, and get inspiration delivered straight to your inbox.

Kulturklub Gentoftes is a collaboration between Bellevue Teatret, Byens hus, Experimentarium, the Garderhøj Fortress, Moviehouse, Ordrupgaard, Øregaard Museum, Gentoftes libraries, Gentoftes Kino (cinema) and Gentoftes Kommune.

Byens Hus – we create together

Byens Hus at Hellerupvej 22-24 is the hub of our community, where associations such as Headspace Gentoftes, Frivilligcenter & Selvhjælp Gentoftes, Ungemiljøet and Gentoftes Repair Café meet.

Gentoftes Mødes

Gentoftes Mødes (Gentoftes Meets) is a cosy one-day festival celebrating democracy and conversation, where residents, decision makers, networks and associations come together. We explore what matters to our municipality through debates, expert lectures and conversations. It's completely free and everyone is welcome.

- **Find your library**
genbib.dk
- **Browse cultural events**
gentofte.dk/kalender
gentofte.dk/kulturklub
- **Join in**
byenshusgentofte.dk

WHAT DO YOU LOVE DOING IN YOUR SPARE TIME?





Spot Knud Engelhardt's poster columns around the municipality.



Architecture and design

Architecture – classic and modern

High quality and attention to detail define Gentofte Kommune's buildings, squares, streets, parks, green spaces and cemeteries. Our high standards stem from sustained collaboration between private and public developers over many years.

Experience some of our historic architectural treasures on a classic tour: Charlottenlund Palace, Bernstorff Palace and Park with its beautiful Swedish Villa, Gentofte Library and Øregaard Museum and Park. The town hall, a neoclassical gem from 1936, was designed by palace architect Thorvald Jørgensen.

Later, throughout the 20th century and into more recent times, Gentofte has served as a stage for impressive architectural achievements. The now-listed Kildeskovshallen, designed by Karen and Ebbe Clemmensen in 1970, is a beautiful architectural masterpiece, further enhanced by an extension by Entasis Arkitekter.

Another notable building is Munkegårdsskolen school, designed by Arne Jacobsen and later extended by architect Dorte Mandrup – a listed masterpiece which beautifully merges past and present.

The breakthrough of Modernism in Denmark is also evident in Arne Jacobsen's petrol station in Skovshoved, and throughout the Bellevue area in Klampenborg.

Architecture at sports facilities, care homes and standard residential housing

We also have seven halls worthy of a mention when on the subject of architecture: The sports hall at Bakkegårdsskolen school, Ordrup Hallen, Gersonsvej Fritidscenter, Bevægelseshaller at Dyssegårdsskolen school, Skovgårdsskolen school, Maglegårdshallen and Gentoftehallen.

Jægersborghave, a care home located on the site of the barracks in Jægersborg, is another example of exciting architecture. Overlooking Hundesømosen, Jægersborg Allé and Jægersborg Dyrehave (deer park), the area also houses the listed ruins of Jægersborg Castle.

Gentofte is also home to a large number of villas and apartment buildings designed by some of Denmark's most prestigious architects.

Engelhardt signs and poster columns

The municipal road signs with the special heart-shaped dot above the 'j' in the word 'vej' (road) are another hallmark. This distinctive design was conceived in the early 1920s by architect and printer Knud V. Engelhardt. The heart has become a cherished symbol, appearing in the right-hand corner of the town arms and in other contexts.

Knud V. Engelhardt was also responsible for designing the elegant toadstool-shaped poster columns, all 30 of which have fortunately been preserved throughout Gentofte.



WHAT DO YOU LOVE DOING IN YOUR SPARE TIME?

Outdoor life

In the woods?

Despite being one of Denmark's smallest municipalities, Gentofte offers multiple woodland areas for outdoor recreation.

To the very north lies Ermelundsletten, situated in the southern section of Jægersborg Hegn – popularly known as Dyrehaven, or the Deer Park in English.

A little further south, you can go for a walk in Charlottenlund Skov – a lush, deciduous woodland with beech and oak trees. It borders Øresund to the east, separated by the coastal road Strandvejen and recreational areas. A section of the woodland contains the Forrestbotanisk Have (Forest Botanical Garden), where you can get lost among exotic plants and shrubs. At the heart of the woods stands Charlottenlund Palace, notable as the birthplace of King Christian X, among other historical distinctions.

In the park?

Gentofte is a green municipality with many parks, green spaces, gardens and cemeteries where you can enjoy nature.

The municipality features no fewer than 18 parks, and our website provides a comprehensive overview of all our parks and green spaces as well as a guide to outdoor fitness areas, playgrounds, freely available picnic facilities and public toilets.

By the harbour?

The municipality has three harbours: Skovshoved Harbour, Hellerup Marina and Tuborg Harbour.

Skovshoved Harbour has undergone comprehensive expansion and modernisation, and now offers a total of 645 berths and 30,000 m² of attractive, new land areas. For information about available berths, please visit the websites of the harbour concerned.

On the beach?

There are three public beaches in Gentofte Kommune: Bellevue Strandpark, Charlottenlund Strandpark and Hellerup Strandpark.

Biking and walking?

We've put together some information about the marked cycling routes and walks in Gentofte. If you like being inspired while you're out and about, you can read about the attractions along these routes before, during or after your walk or bike ride.

With the dog?

For dog owners, there are excellent spots throughout the area to exercise your four-legged friend.

These are the parks where dogs are allowed to go off-lead all year round: Bernstorffsparken, Dyssegdsparken and Charlottenlund Skov. Please note that certain areas of these parks require dogs to be on the lead.

- **Find nature, parks and beaches**
gentofte.dk/fritid
- **Find cycling routes**
gentofte.dk/cykelruter
- **Find walks**
gentofte.dk/walks



SoMe

Are you on social media?

Then follow us on Facebook or LinkedIn, where you can stay abreast of what's on.

Gentofte on Facebook

Follow Gentofte Kommune's Facebook page to keep up with what's going on in the municipality, including cultural offerings, interesting articles, photo competitions, etc.

Gentofte on LinkedIn

Curious about what Gentofte Kommune has to offer as a workplace? Then follow us on LinkedIn. We use this platform to share stories about our initiatives in human resources, climate action and much more besides. Job vacancies are also posted on the platform.

If you're looking for work in the municipality, you can also visit gentofte.dk/job, where you can read more about our job vacancies and Gentofte's job promise that all employees in Gentofte Kommune will have a say in shaping their working conditions.

